



# Alford Homes, L.P.



3136 BRYN MAWR {UNIVERSITY PARK, TEXAS}

## *French Country Style*

**Dallas' Acclaimed Park Cities Neighborhood** - Enjoy the benefits of one of the area's most prestigious addresses in University Park & Highland Park along with the exceptionally rated school system.

At Alford Home, we know that the ultimate luxury is the peace-of-mind you'll have while working with an award-winning, time-honored custom builder. Our standards of excellence in architectural design, quality construction, along with our commitment to homeowner satisfaction are unparalleled.

Company president Greg Alford, who has more than 36 years of homebuilding business, says, "We stand behind every home we build. At Alford Homes, our integrity, accountability & quality construction along with complete homeowner satisfaction is our top priority. We appreciate you trusting Alford Homes with one of the most important investments you'll make – your new custom home."

**Home Profile** – Approx. 6488 sq. ft. of living area with 3 stories, 5 bedrooms, 5 ½ bathrooms, library with office nook, game room, gourmet kitchen with an island. Additionally this custom home has a master bedroom suite along with his & her closets with built-ins. Lot Size is 70 x 160

**Status:** Under Construction & Available Fall 2016



*Please call us for more details.*

**Mark Galanos: 214-448-8223**

**Email: [MarkG@Brexen.com](mailto:MarkG@Brexen.com)**

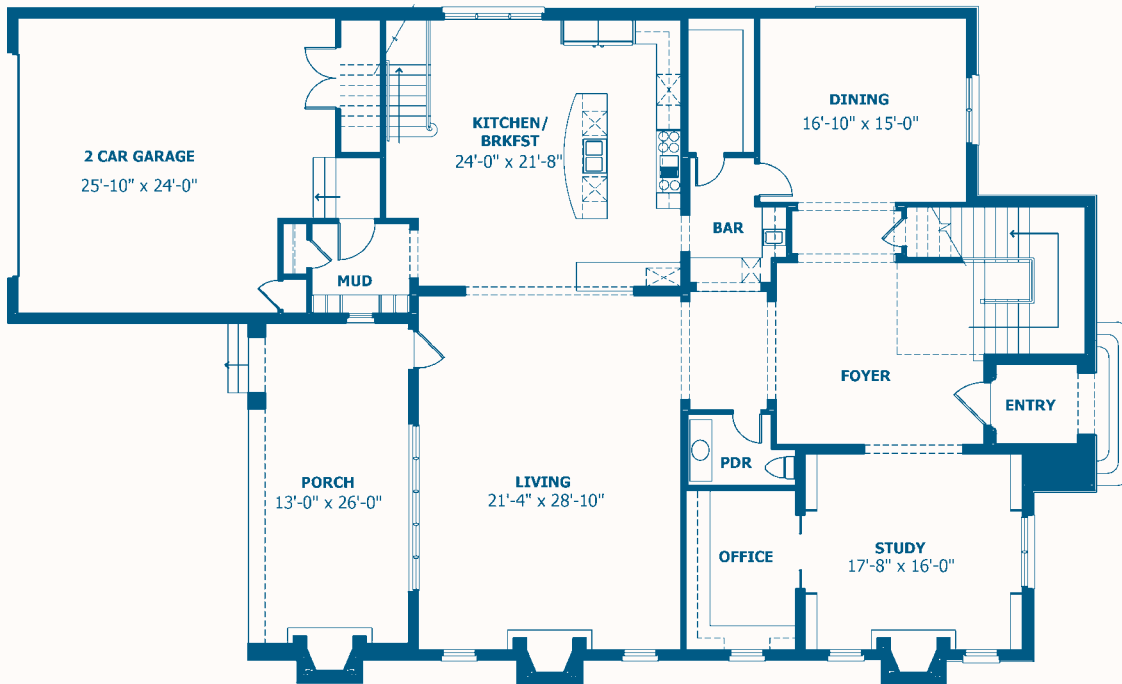
*(This home is under construction and some details and amenities may change.)*



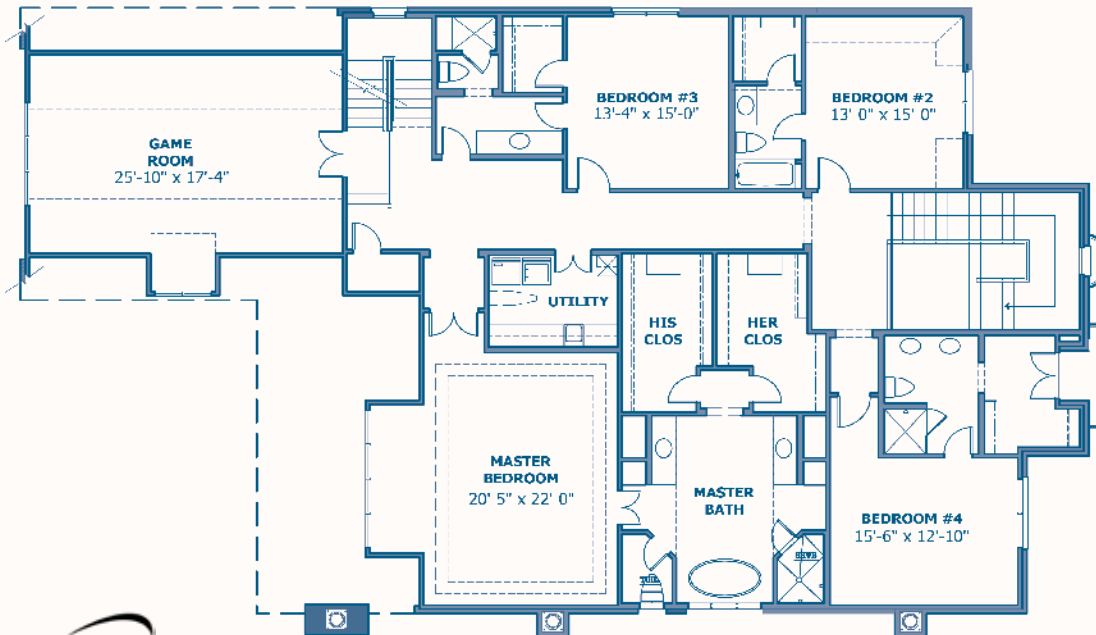
# Alford Homes, L.P.

972.429.1074

AlfordHomes.com



## FIRST FLOOR



## SECOND FLOOR

**BEST**  
**DHome**  
**2016**

DHome Magazine  
Best Builder Award  
2005—2016

**ARC**  
AWARDS  
WINNER

**\* LIVING \***  
**BEST OF**  
NORTH DALLAS  
& PARK CITIES  
READERS CHOICE

**GRADUATE**  
**MASTER**  
**BUILDER**

**Green Built™**  
**TEXAS**

**CERTIFIED**  
**GREEN**  
**PROFESSIONAL™**

*This home has a 3rd story with a 5th bedroom  
& bath plus a walk-in attic storage area*